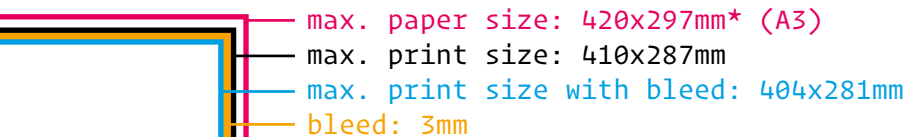




Sizes & Marks



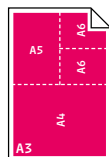
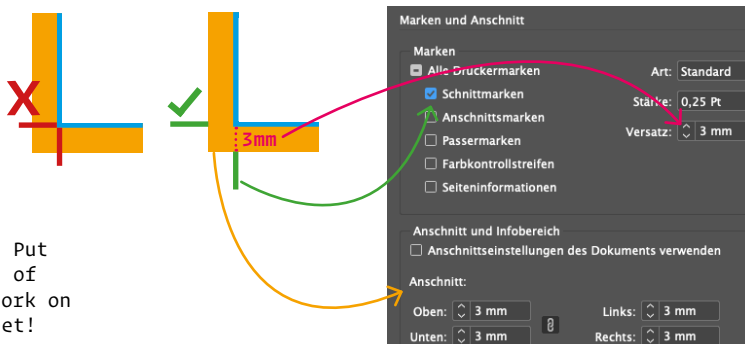
*Paper longer than 420mm is possible but does not change the print size

Please make sure to add **crop marks** if:

- you print with more than 2 colors
- you print with bleed
- you want your prints cut down
- your prints are double-sided

-> Please add 3mm offset to the crop marks:

If you use **InDesign**, you can do this in the Export settings:



PRO-Tipp: Put multiples of your artwork on an A3 sheet!

Paper

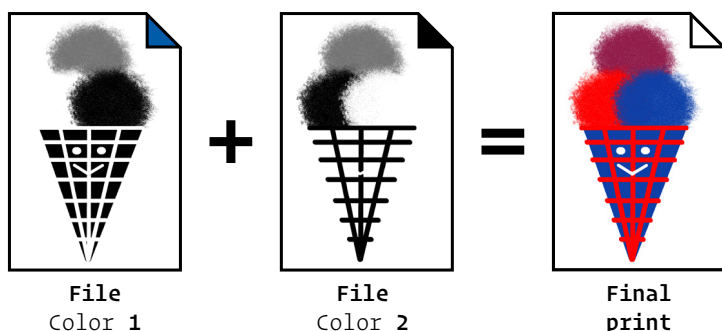
We stock a variety of **uncoated** paper in our studio.*

Our Riso works with grammages from 60-300g.

You can also bring your own paper but we have to test it beforehand to make sure it works well with the machine.

*at the moment we stock:
Fedrigoni Arena Natural/Ivory/White 70/90/120/200/300g
Fedrigoni Freelifa Cento 260g
Fedrigoni Freelifa Kendo 200g
Munken Polar Rough 300g
various colored papers

File Setup



In the example above you can see how knock-out (left and right bottom scoop) and over-printing (top scoop) works - consider this in your artwork. Most colors mix well when printed with max. 90% on top of each other.

To print your work, we need PDFs in Grey-scale (no CMYK/RGB) with 600 dpi, one layer/page for each color.

Riso Quirks

Riso printing is, so please keep the following in mind:

- Accuracy/registration
Expect up to 1mm of inaccuracy when printing with multiple colors.
- Smudging:
Riso ink never fully dries. Depending on the amount of ink coverage, your prints can smudge a bit.
- Color representation:
Riso inks don't do well in screen representation. The scans below can only give a rough idea of what your prints will look like. That's why we always recommend **test prints** if you're trying to achieve a specific color!

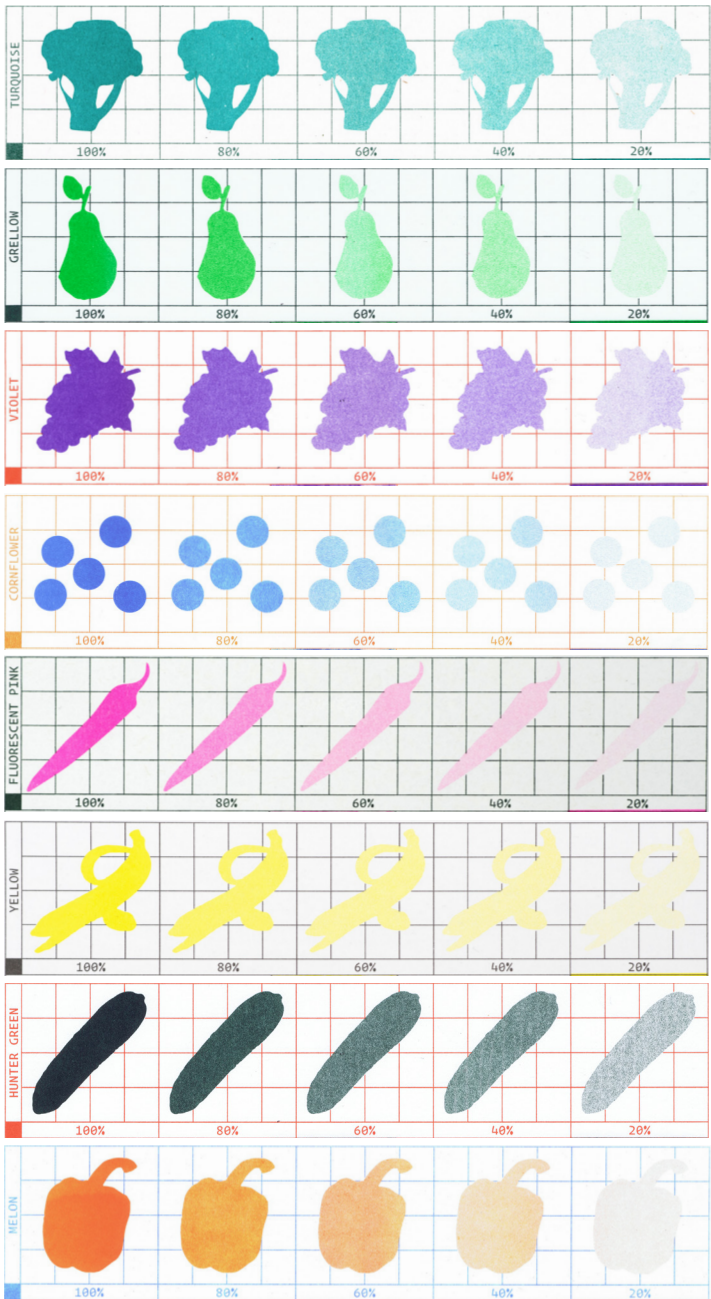
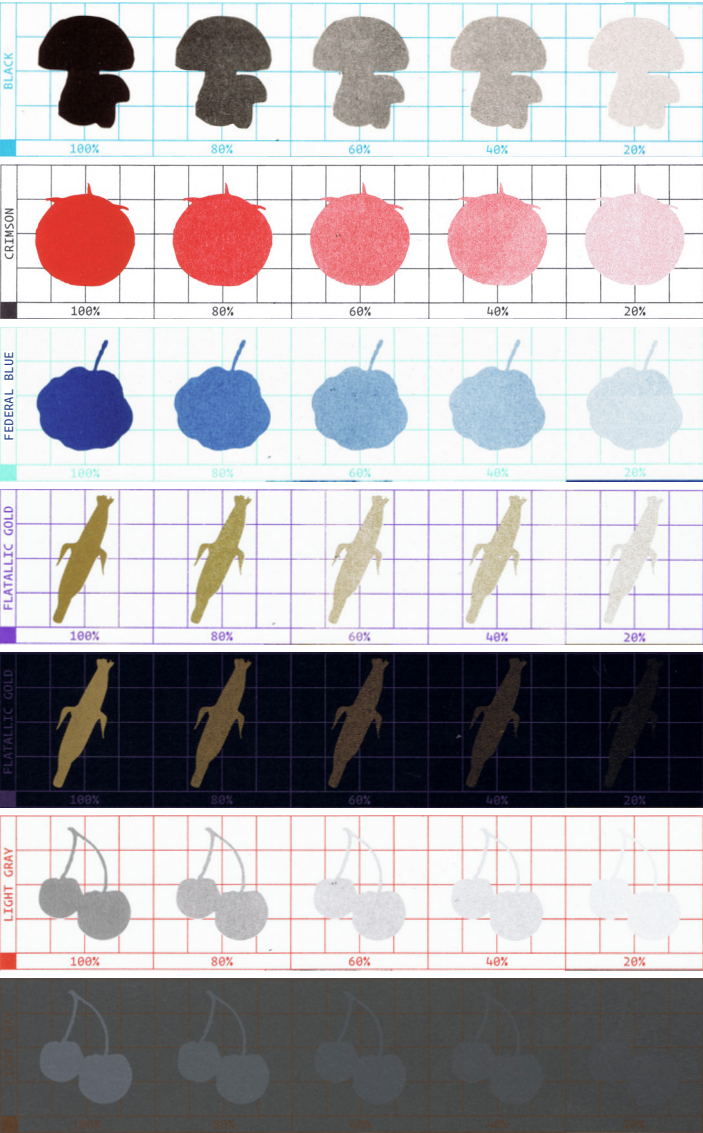
If you need help with file setup/separations/layout, we offer pre-press services!

For questions, don't hesitate to reach out: moin@risofort.press

www.risofort.press / IG: @risofort

Our Riso inks

We currently stock 13 inks – most of them can be mixed in print to achieve an even bigger spectrum of color (see below). For corresponding PANTONE/RGB/CMYK values, please visit www.stencil.wiki/colors



OVERPRINTING & GRADIENTS

Riso inks are translucent (some more than others). They can be mixed to obtain a variety of colors. When printing two or more colors on top of each other, keep in mind to use less than 100% color density to avoid inks “swimming” on top of each other. When printing gradients, don’t go lower than 10% density to avoid a sudden drop in the FM screening.

